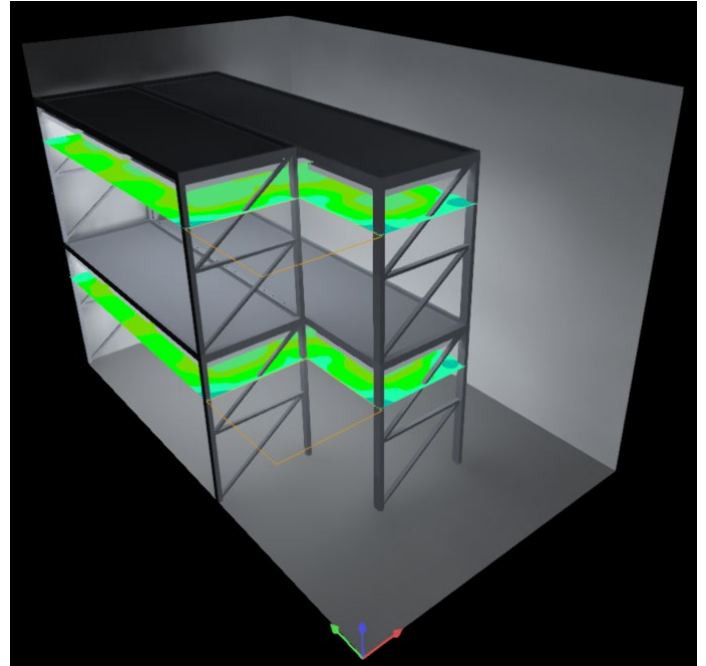


BIOS Endeavour 970, Multi-tier

Indoor Vegetation Room Overview - Small Canopy

THE ONLY GROW LIGHTS DESIGNED BY NATURE

BIOS uses a biology-first approach, to engineer horticultural lighting solutions that improve the quality and quantity of crops across cultivation stages for indoor and greenhouse applications — and solves the cost and efficiency issues faced by industrial grow operations.



Vegetation Room Layout Image



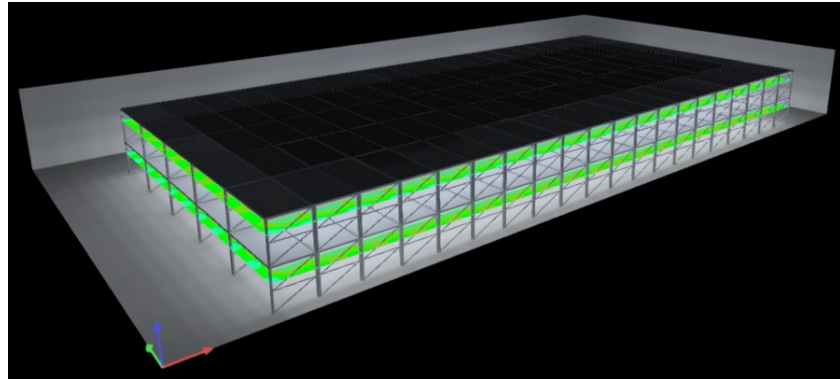
- Target Light Intensity
500-600 $\mu\text{mol}/\text{m}^2/\text{s}$
- LED to Top of Canopy Distance
1 ft
- Total BIOS Icarus Endeavour
970 Fixtures
14
- Average/Maximum PPFD
629 $\mu\text{mol}/\text{m}^2/\text{s}$ /
790 $\mu\text{mol}/\text{m}^2/\text{s}$
- Total Wattage
4,760W
- Total LED BTUs
16,232 BTUs
- Number of Tiers
2
- Canopy Area
224 ft^2

BIOS Endeavour 970, Multi-tier

Indoor Vegetation Room Overview - Large Canopy

*THE ONLY GROW LIGHTS
DESIGNED BY NATURE*

BIOS uses a biology-first approach, to engineer horticultural lighting solutions that improve the quality and quantity of crops across cultivation stages for indoor and greenhouse applications — and solves the cost and efficiency issues faced by industrial grow operations.



Veg 2 Layout Image



- Target Light Intensity
NA
- LED to Top of Canopy Distance
1 ft
- Total BIOS Endeavour 970
Fixtures
400
- Average/Maximum PPFD
678 $\mu\text{mol}/\text{m}^2/\text{s}$ /
819 $\mu\text{mol}/\text{m}^2/\text{s}$
- Total Wattage
136,000W
- Total LED BTUs
463,760 BTUs
- Number of Tiers
2
- Canopy Area
6400 ft^2